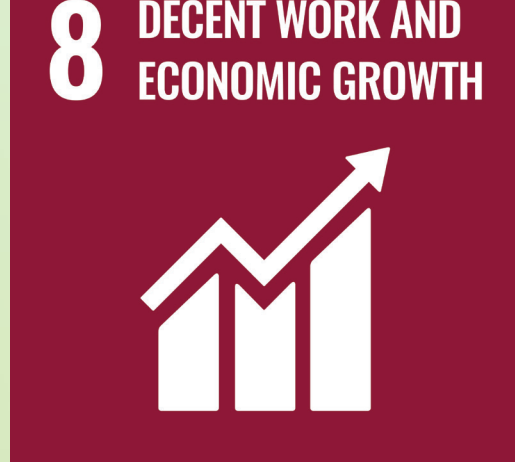


CELSA Group, THE FIRST CIRCULAR SUPPLY CHAIN

2021

ACHIEVEMENTS
INCLUDED
IN OUR CIRCULARITY
AND SUSTAINABILITY
REPORT

We produce circular and low-carbon steel from scrap and using the electric furnace technology. We aim to be Net Positive by 2050, driven by the sustainable development goals and focusing on six of them. Our Sustainability Roadmap 2021-2050 is fully integrated into the business strategy.



OUR YEAR IN FIGURES

We are second manufacturer of long steel products in Europe and the most diversified and vertically integrated European producer.



TURN
OVER
5,283
M€



STEEL
PRODUCTION
6.6
Mt



INVESTMENT
IN R&D
23.5
M€



% VERTICAL
INTEGRATION
35% Upstream
19% Downstream



TOTAL NUMBER
OF PROFESSIONALS
11,929
(own and subcontractors employees)

1. WE ARE CIRCULAR

We are an integrated group with a completely circular industrial process



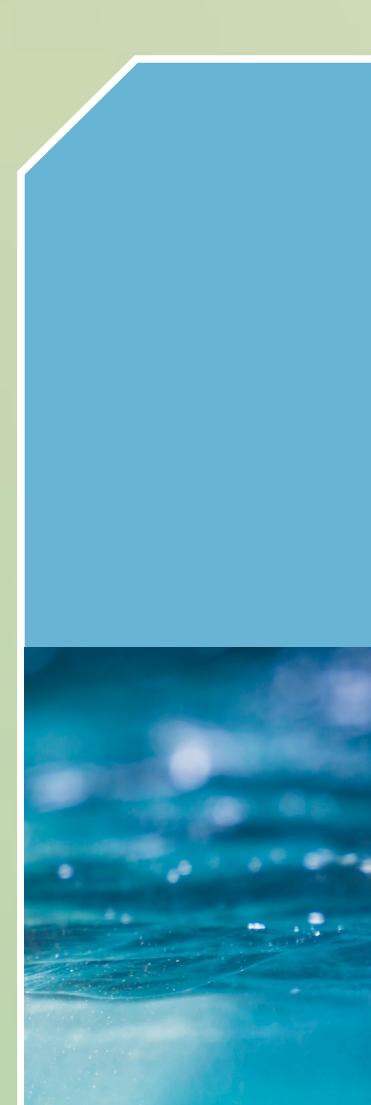
96.5%

of the final
product
is made
of recycled
steel



94%

of total
waste recovered



40%

of water consumption
reduction by
manufacturing
with scrap instead
of iron ore



WE RECYCLED
IN A YEAR
7.01 Mt
of scrap



RECOVERED
NON-FERROUS METALS
73,000 t



RECOVERED
PLASTICS
860 t

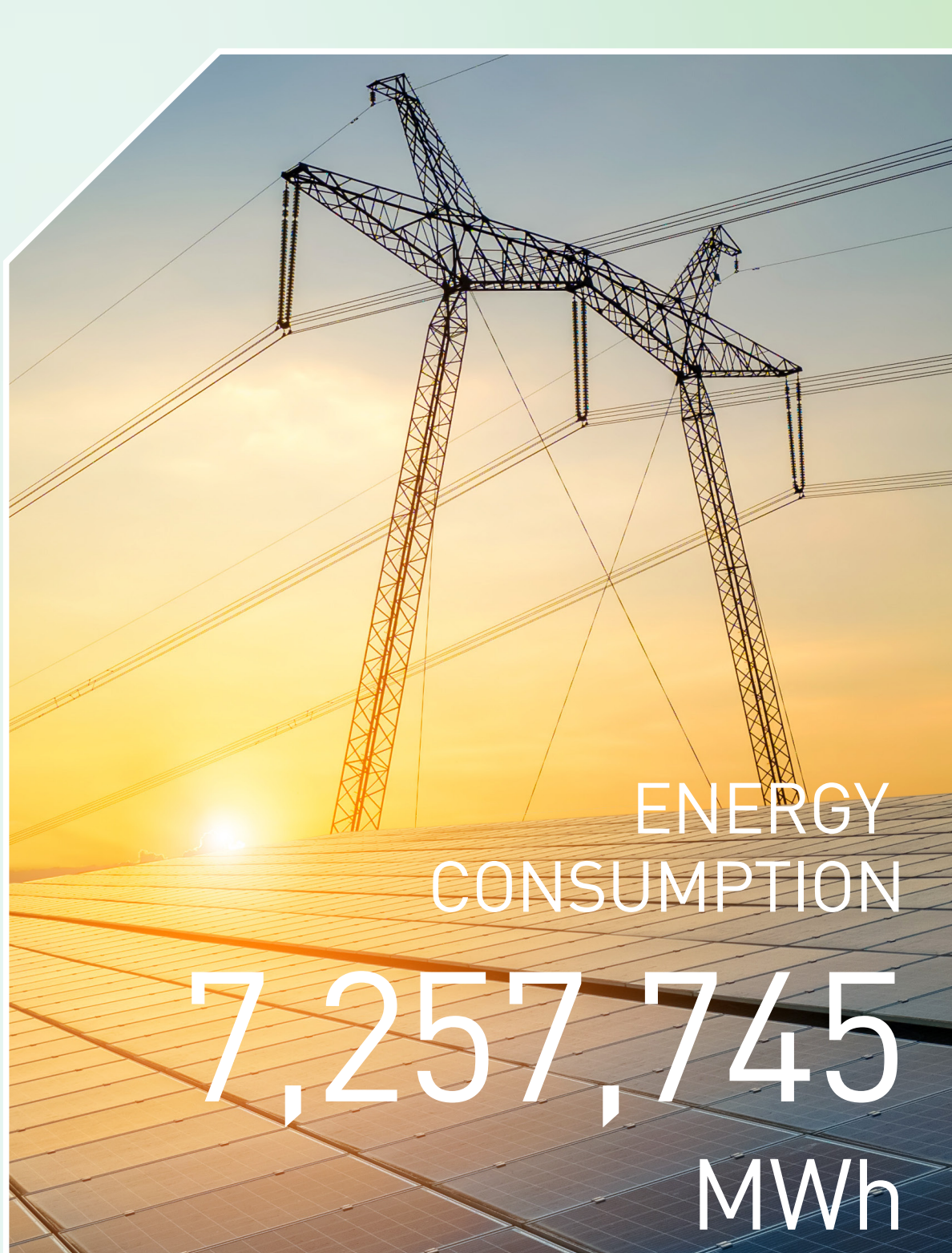
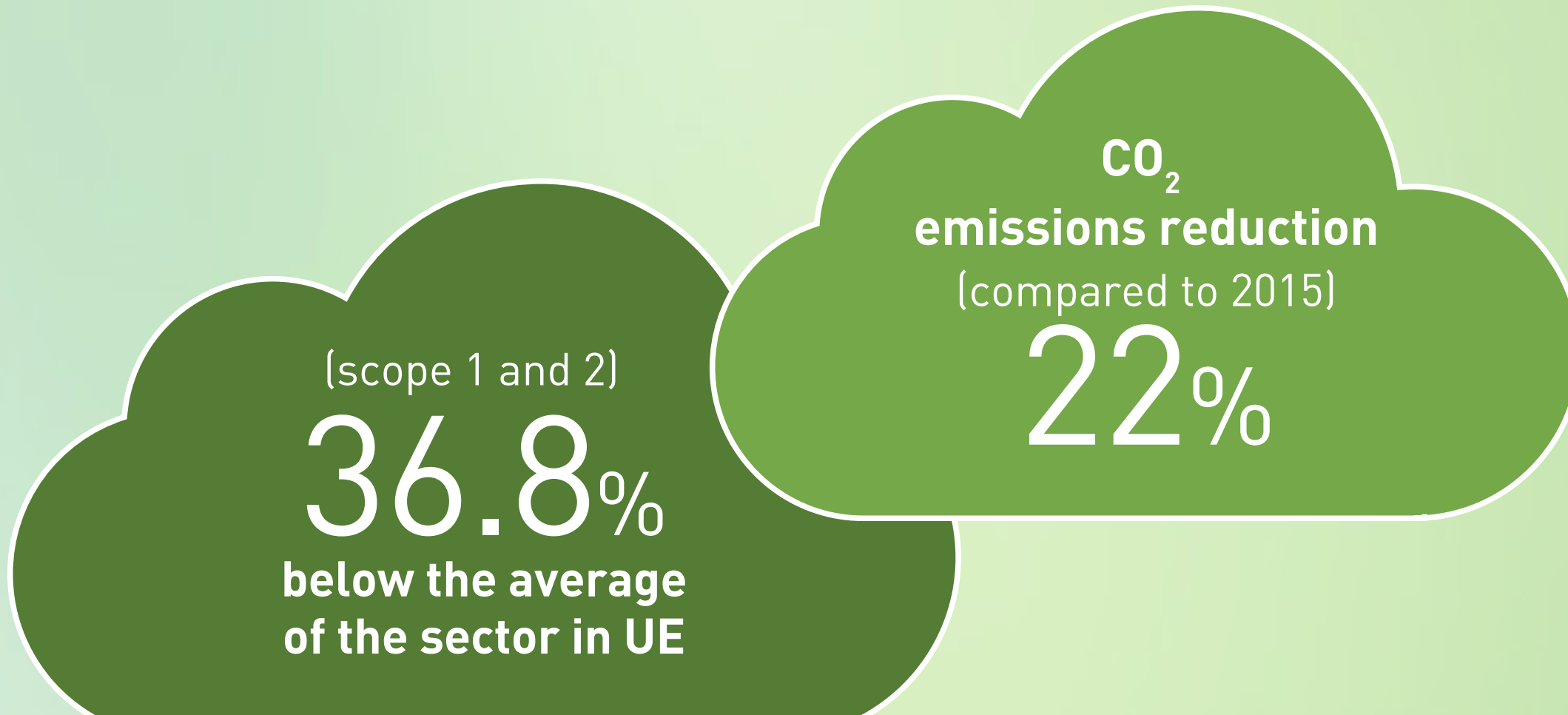


VALUED
COPRODUCTS
2.6 Mt

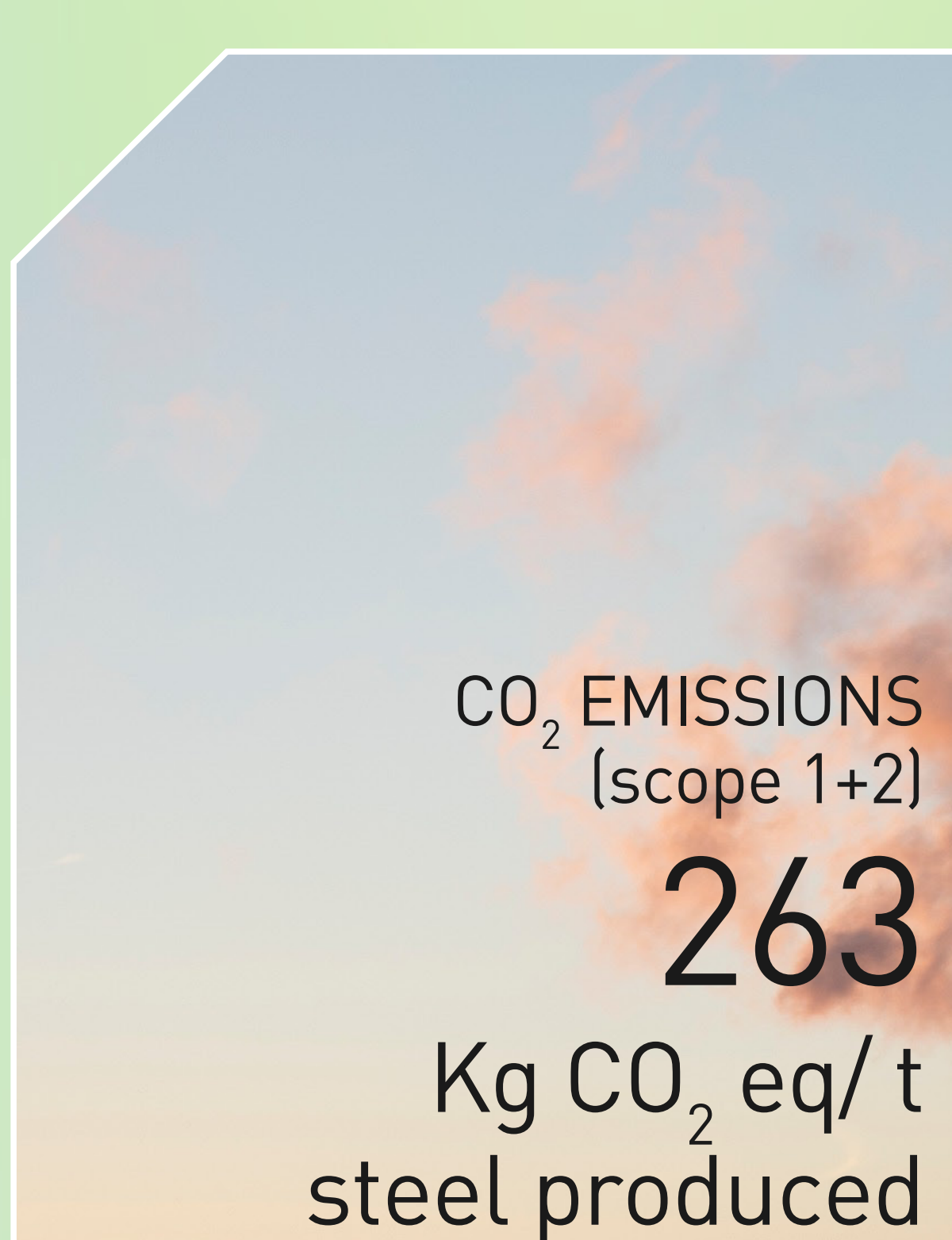
2. COMMITTED TO CLIMATE

We work to be a Net positive company by 2050

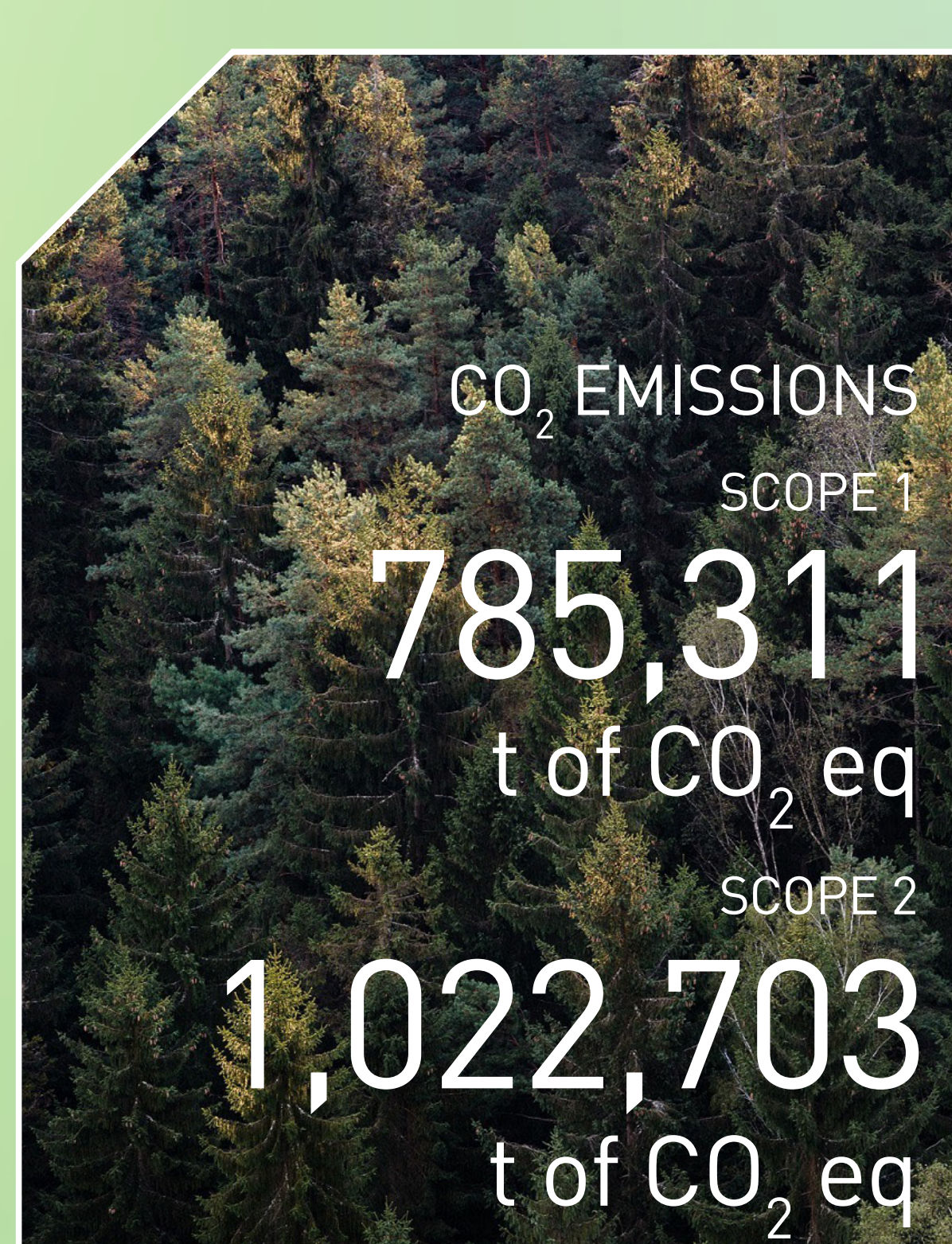
The activity carried out in our steel mills in Spain, France, Poland, and Norway is eligible as an activity included in the EU Taxonomy of Climate Change Mitigation for steelmaking.



ENERGY
CONSUMPTION
7,257,745
MWh



CO₂ EMISSIONS
(scope 1+2)
263
Kg CO₂ eq/t
steel produced



CO₂ EMISSIONS
SCOPE 1
785,311
t of CO₂ eq
SCOPE 2
1,022,703
t of CO₂ eq

3. COMMITTED TO PEOPLE & THE LOCAL COMMUNITY

Our priority is the safety and health of our professionals.
Goal: to become zero accidents company



17%
increased presence
of women
in the last 5 years



93.6%
Professionals
with indefinite
contract



Investment
in training
2.83
M€

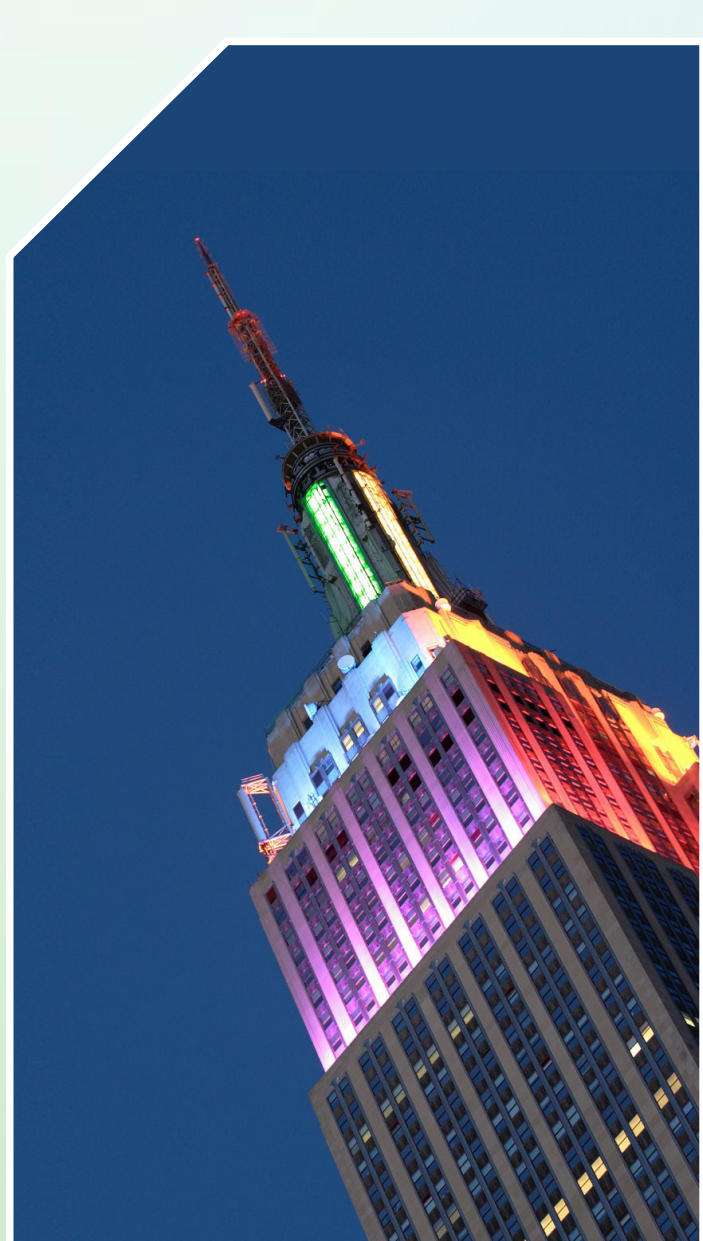
75.4%
of purchases made
from local suppliers in
territories with presence



Local
suppliers
15,729

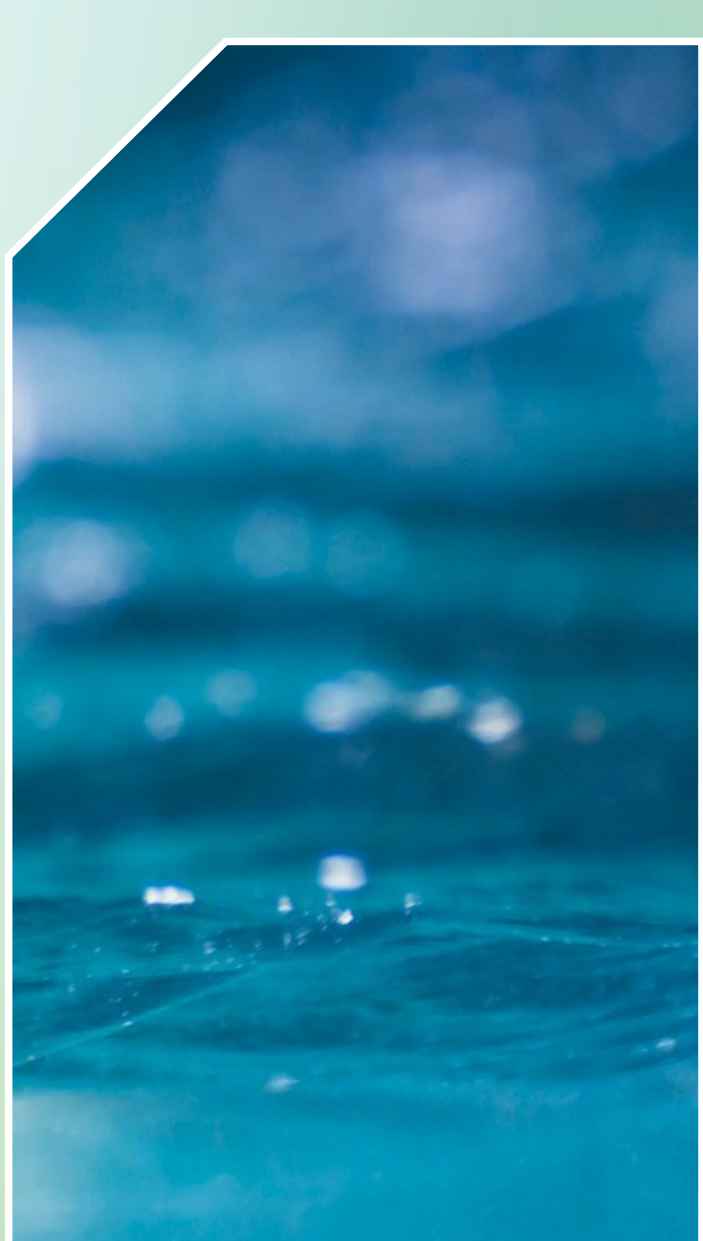
4. PLANET ANNUAL SAVINGS ACHIEVED THANKS TO THE CIRCULAR AND LOW EMISSIONS

13.1
million m³
of natural
resources



equivalent to
12,5 Empire
State Buildings

The
consumption of
17
million m³
of water



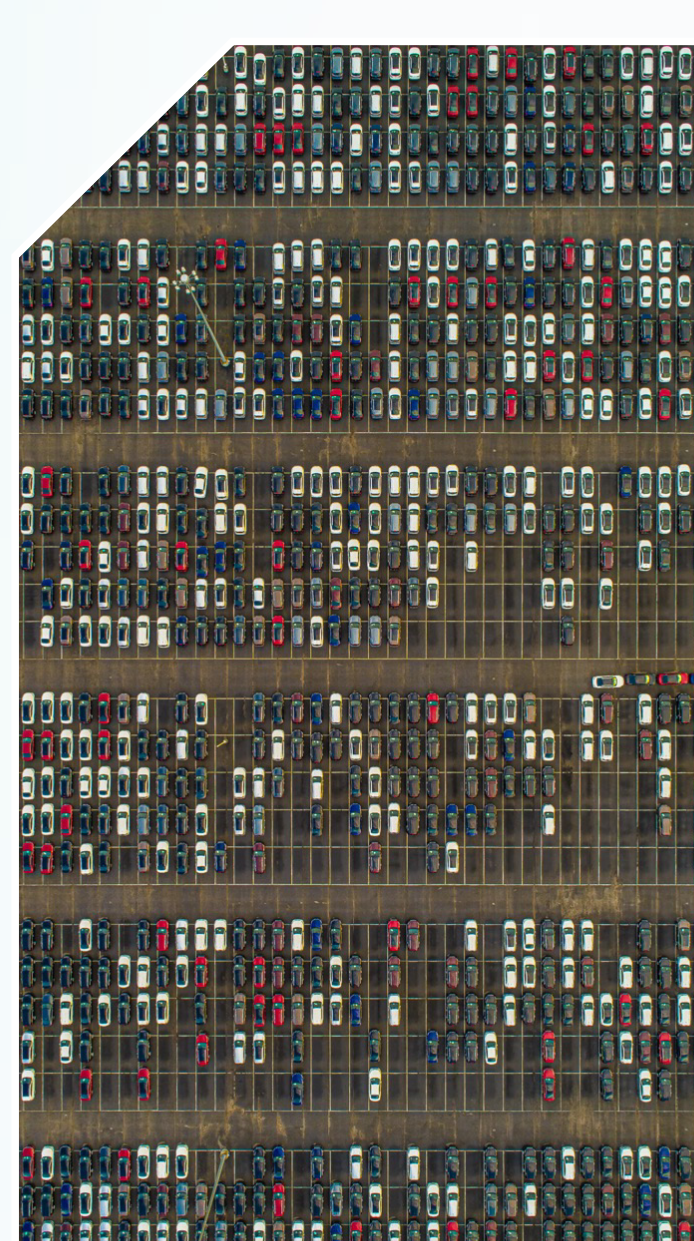
which is comparable
to a city of 350,000
inhabitants in a year

The
consumption of
16,700
GWh/year
of electricity



the equivalent of the
consumption of a city
of 5.1 million inhabitants
in a year

The
emission of
12
million tons
of CO₂



comparable to those
generated
by 2.6 million cars
running for a year (24/7)