

Celsa Huta Ostrowiec, (CELSA Group)

THE FIRST CIRCULAR SUPPLY CHAIN

2021

ACHIEVEMENTS INCLUDED
IN OUR CIRCULARITY
AND SUSTAINABILITY
REPORT

We produce circular and low-carbon steel from scrap and using the electric furnace technology. We aim to be Net Positive by 2050, driven by the sustainable development goals and focusing on six of them. Our Sustainability Roadmap 2021-2050 is fully integrated into the business strategy.



OUR YEAR IN FIGURES

We are second manufacturer of long steel products in Europe and the most diversified and vertically integrated European producer.



TURN OVER

839.25

M€

5,283 M€



STEEL PRODUCTION

1.22

Mt

6.6 Mt



INVESTMENT IN R&D

1.66

M€

23.5 M€



% VERTICAL INTEGRATION

55%

Upstream Integration

35%

Downstream Integration

15%

Downstream Integration



TOTAL NUMBER OF PROFESSIONALS

1,907

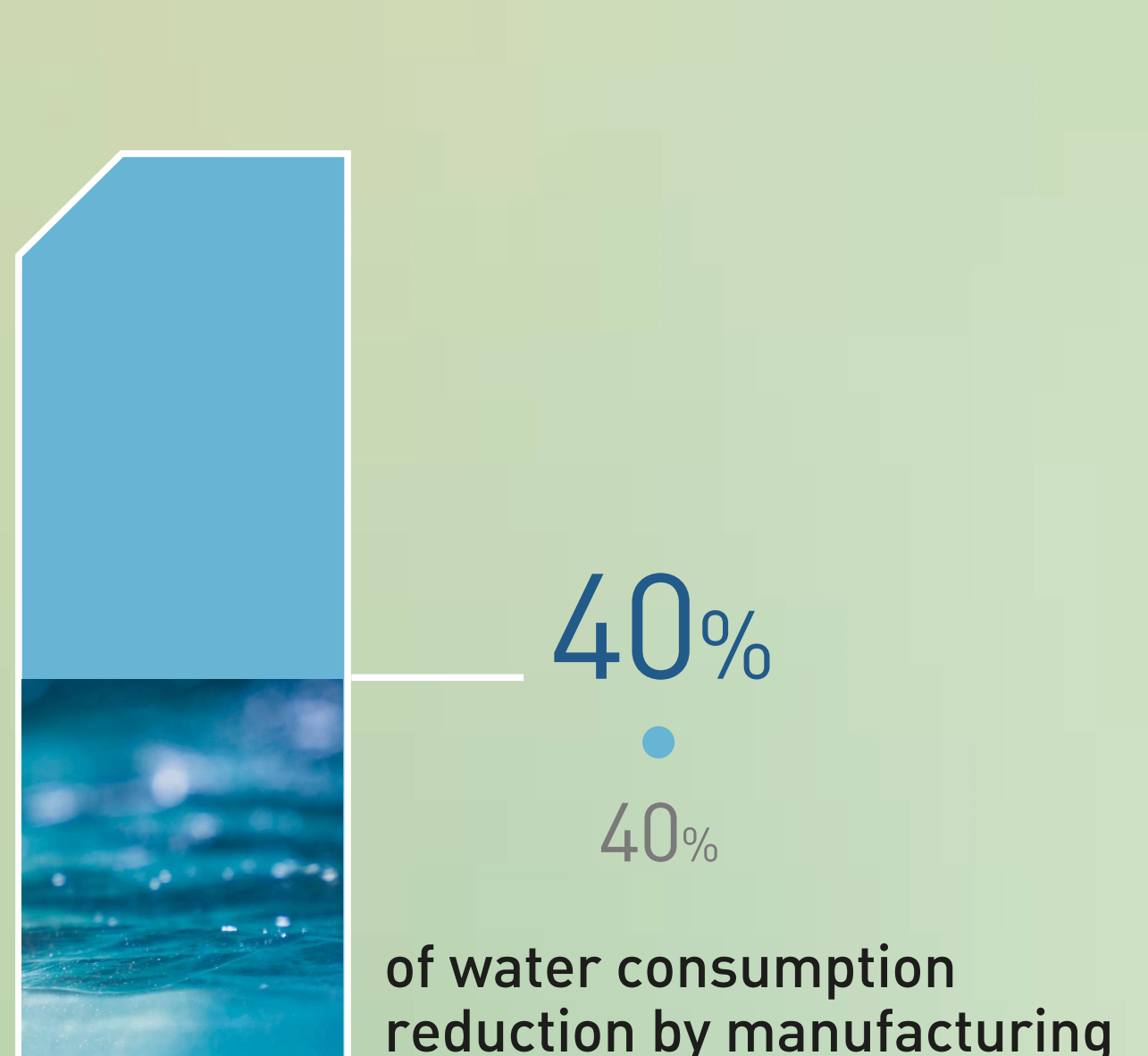
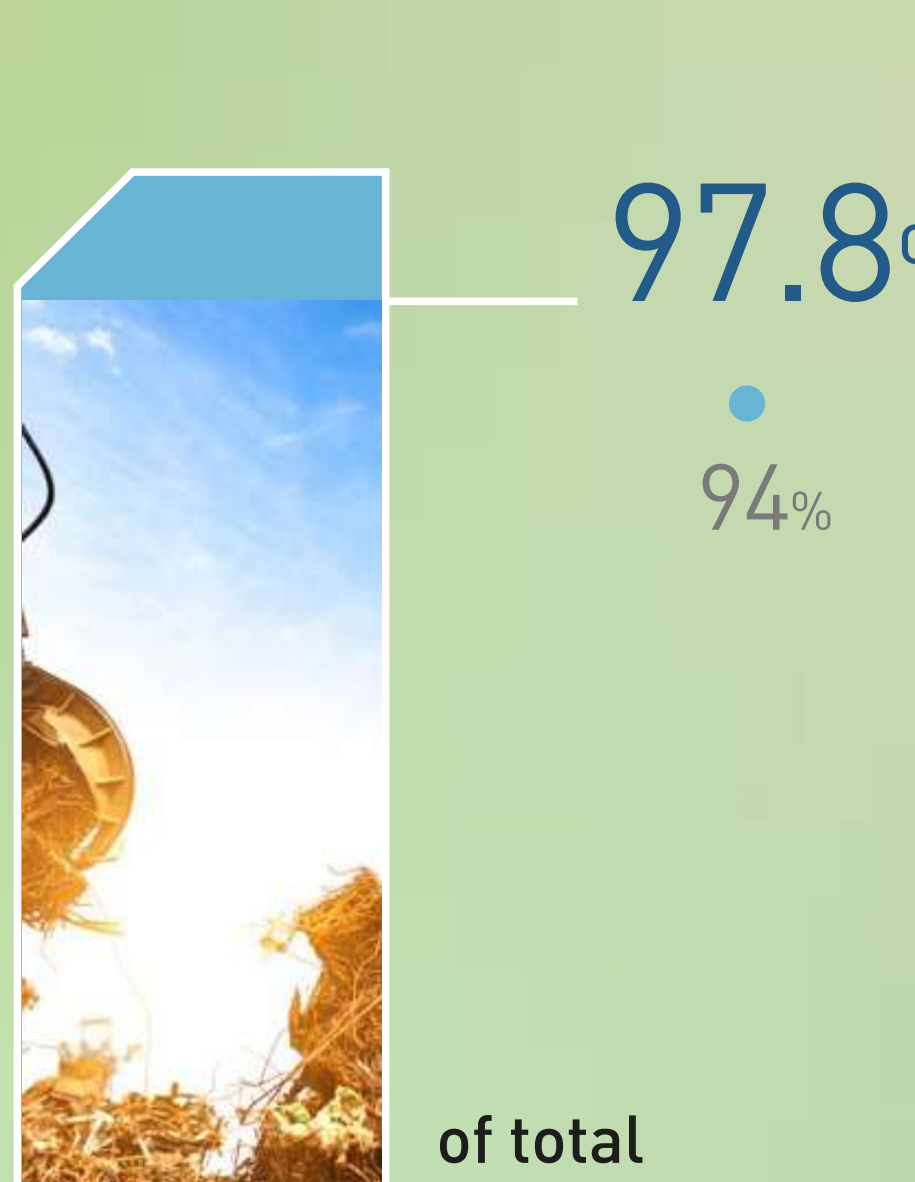
(own and subcontractors employees)

11,929

(own and subcontractors employees)

1. WE ARE CIRCULAR

We are an integrated group with a completely circular industrial process



WE RECYCLED IN A YEAR

1.30Mt

of scrap

7.01Mt



RECOVERED NON-FERROUS METALS

7,000 t

73,000 t



RECOVERED PLASTICS

0 t

860 t



VALUED COPRODUCTS

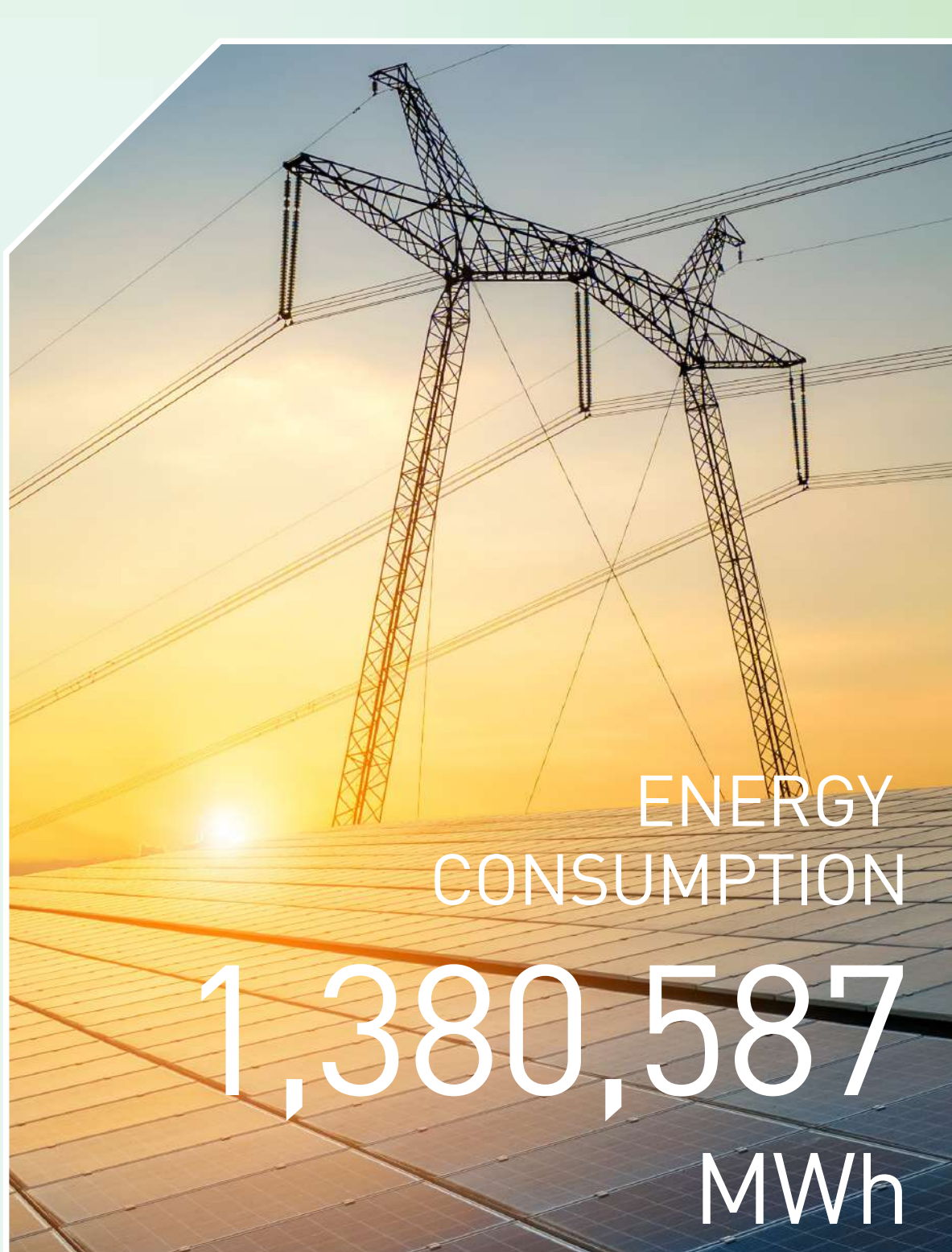
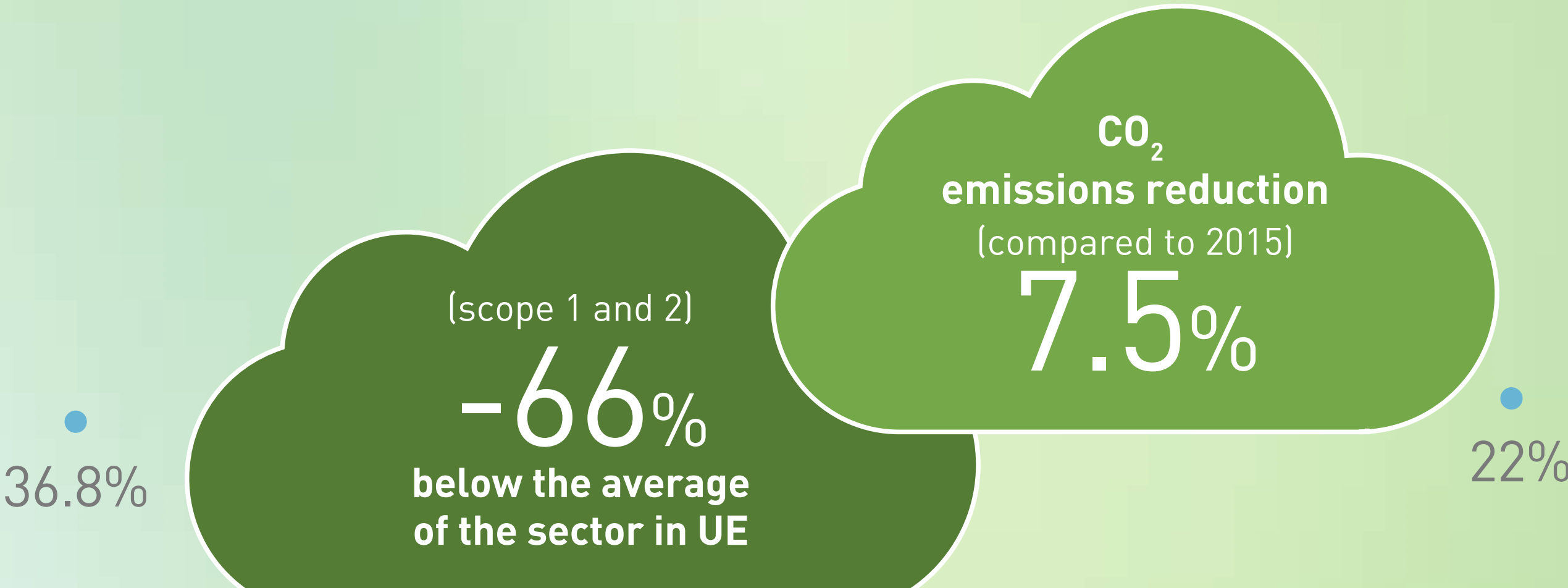
0.6 Mt

2.6 Mt

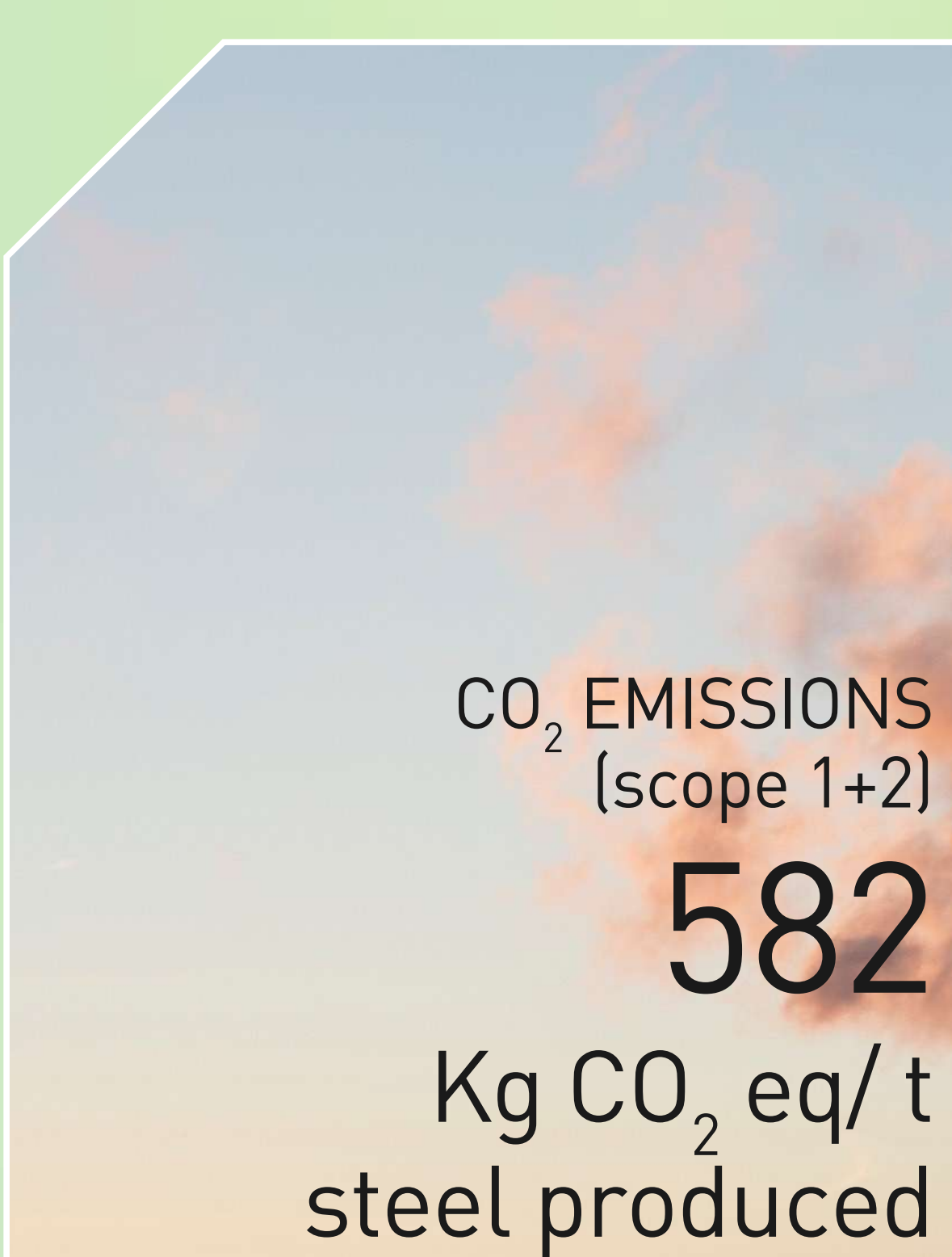
2. COMMITTED TO CLIMATE

We work to be a Net positive company by 2050

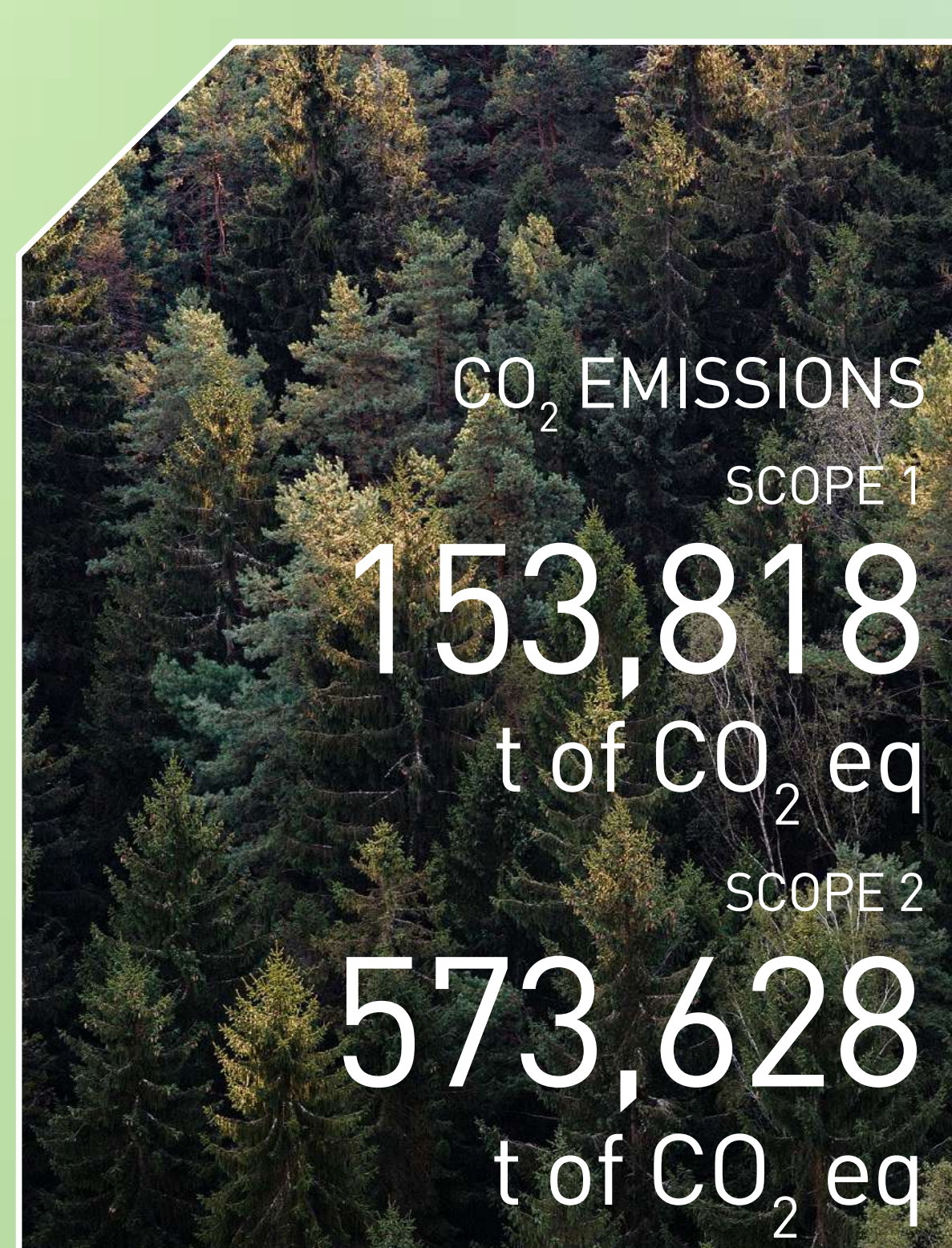
The activity carried out in our steel mills in Spain, France, Poland, and Norway is eligible as an activity included in the EU Taxonomy of Climate Change Mitigation for steelmaking.



7,257,745 MWh



263 Kg CO₂ eq/ t



SCOPE 1
785,311 t of CO₂ eq

SCOPE 2
1,022,703 t of CO₂ eq

3. COMMITTED TO PEOPLE & THE LOCAL COMMUNITY

Our priority is the safety and health of our professionals.

Goal: to become zero accidents company



increased presence of women in the last 5 years

17%



90.8% Professionals with indefinite contract

93.6%



Investment in training

0.27 M€

2.83M€

86% of purchases made from local suppliers in territories with presence

75.4%



Local suppliers

3,884

15,729

4. PLANET ANNUAL SAVINGS ACHIEVED THANKS TO THE CIRCULAR AND LOW EMISSIONS

2.41 million m³ of natural resources



equivalent to 2.3 Empire State Buildings

13.1Mm³

The consumption of 3.06 million m³ of water



which is comparable to a city of 62,995 inhabitants in a year

17Mm³

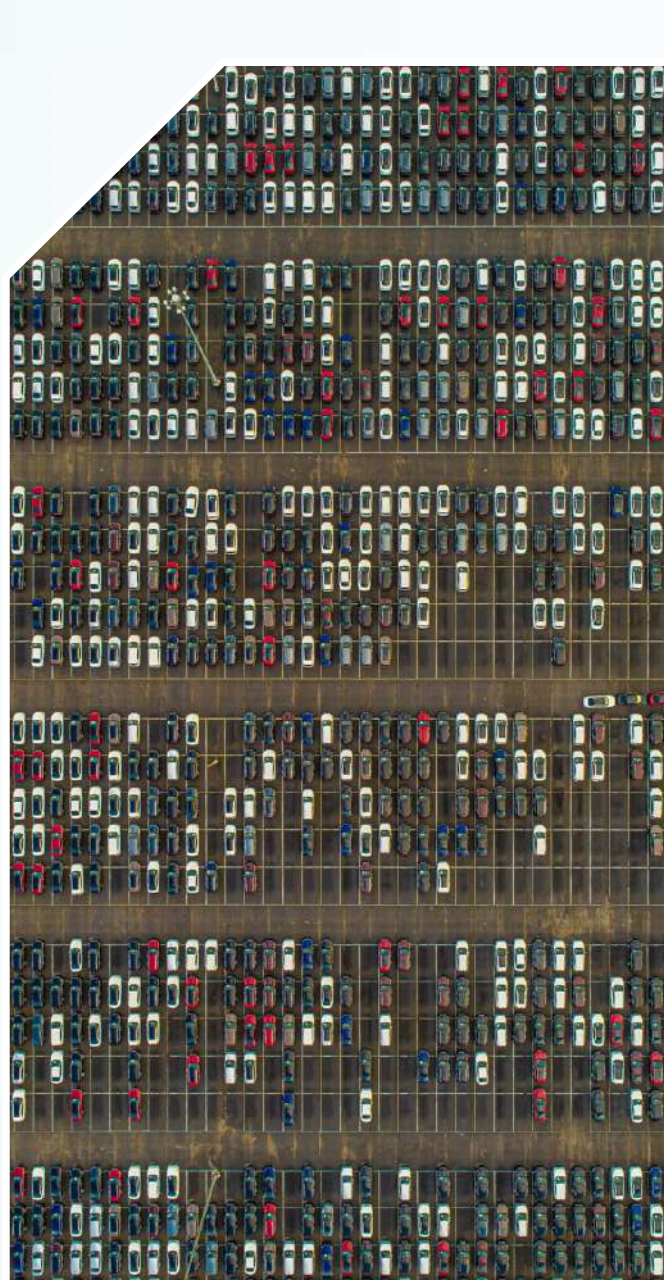
The consumption of 3,221 GWh/year of electricity



the equivalent of the consumption of a city of 0.98 million inhabitants in a year

16,700 GWh/year

The emission of 1.89 million tons of CO₂



comparable to those generated by 0.41 million cars running for a year (24/7)

12Mt

