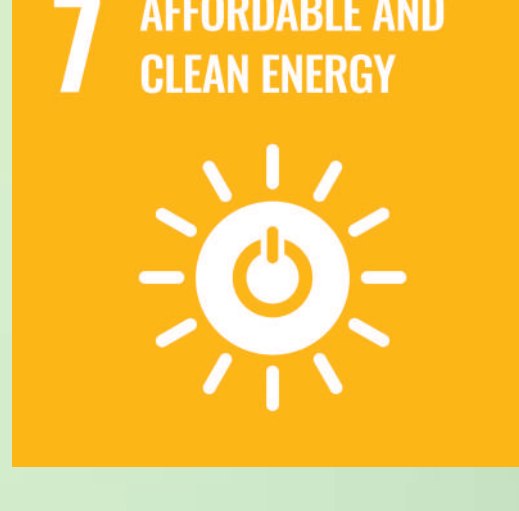


CELSA UK, (CELSA Group) THE FIRST CIRCULAR SUPPLY CHAIN

2021

ACHIEVEMENTS
INCLUDED
IN OUR CIRCULARITY
AND SUSTAINABILITY
REPORT

We produce circular and low-carbon steel from scrap and using the electric furnace technology. We aim to be Net Positive by 2050, driven by the sustainable development goals and focusing on six of them. Our Sustainability Roadmap 2021-2050 is fully integrated into the business strategy.



OUR YEAR IN FIGURES

We are second manufacturer of long steel products in Europe and the most diversified and vertically integrated European producer.



TURN
OVER
788.56
M€

5,283 M€



STEEL
PRODUCTION
0.93
Mt

6.6 Mt



INVESTMENT
IN R&D
1.27
M€

23.5 M€



% VERTICAL
INTEGRATION
19%
Upstream
Integration

35%



25%
Downstream
Integration

19%



TOTAL NUMBER
OF PROFESSIONALS
1,880
(own and subcontractors
employees)

11,929

1. WE ARE CIRCULAR

We are an integrated group with a completely circular industrial process



99.63%

96.5%

of the final
product
is made
of recycled
steel



99.5%

94%

of total
waste recovered



40%

40%

of water consumption
reduction by manufacturing
with scrap instead of iron ore



WE RECYCLED
IN A YEAR
1.10Mt
of scrap

7.01Mt



RECOVERED
NON-FERROUS METALS
0t

73,000 t



RECOVERED
PLASTICS
0 t

860 t



VALUED
COPRODUCTS
0.50Mt

2.6 Mt

2. COMMITTED TO CLIMATE

We work to be a Net positive company by 2050

The activity carried out in our steel mills in Spain, France, Poland, and Norway is eligible as an activity included in the EU Taxonomy of Climate Change Mitigation for steelmaking.

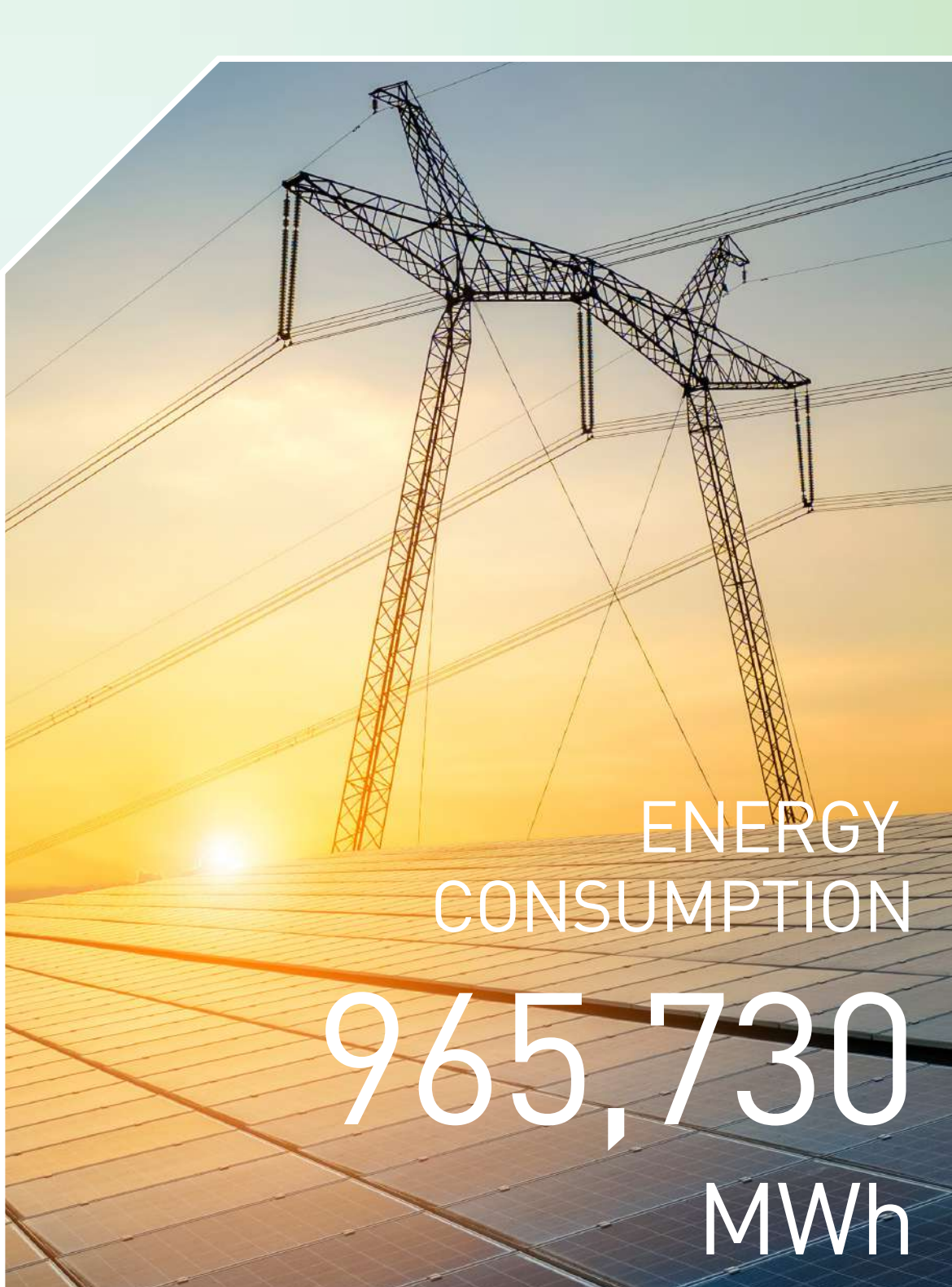


36.8%

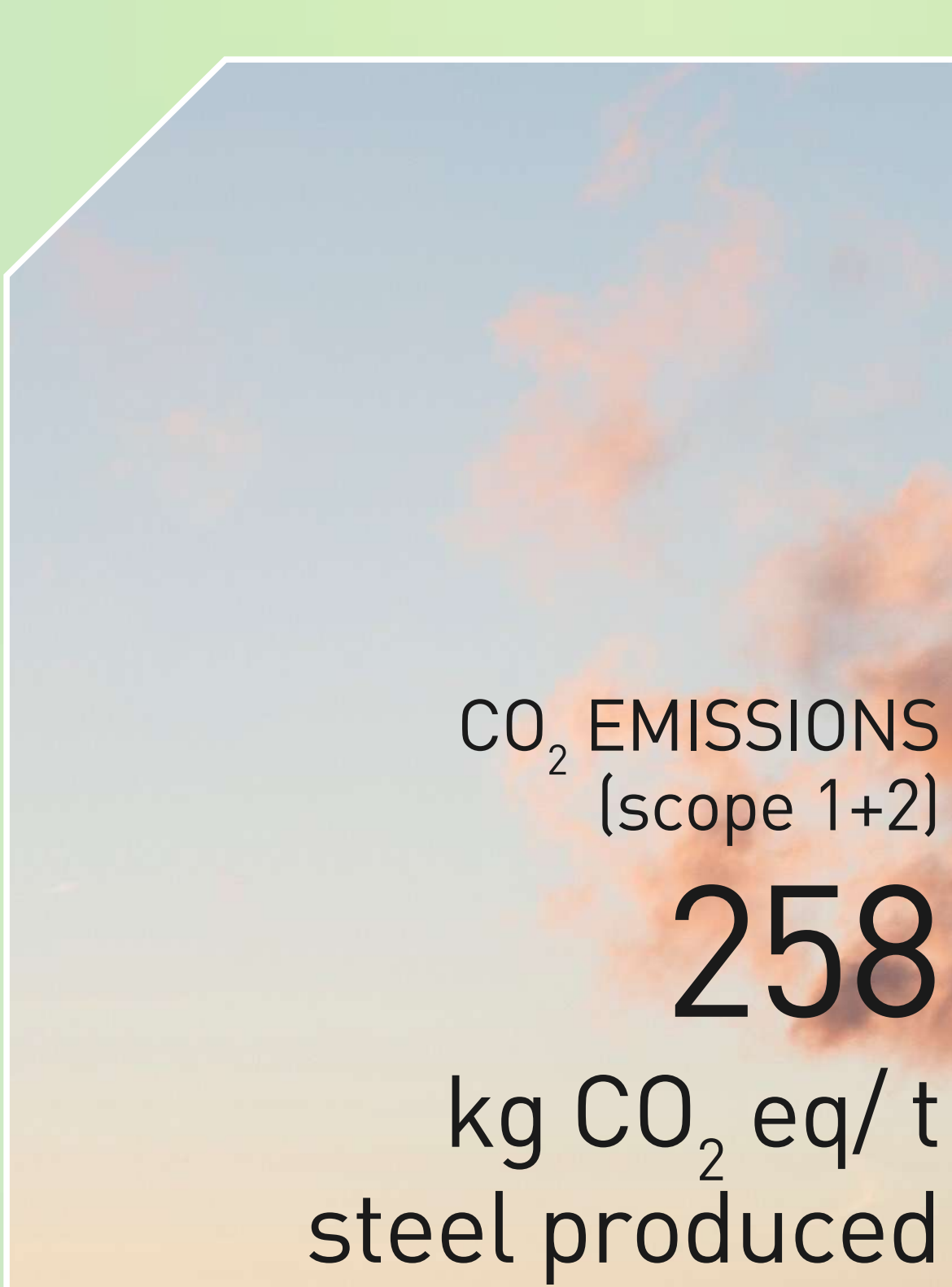
(scope 1 and 2)
37.2%
below the average
of the sector in UE

CO₂
emissions reduction
(compared to 2015)
22%

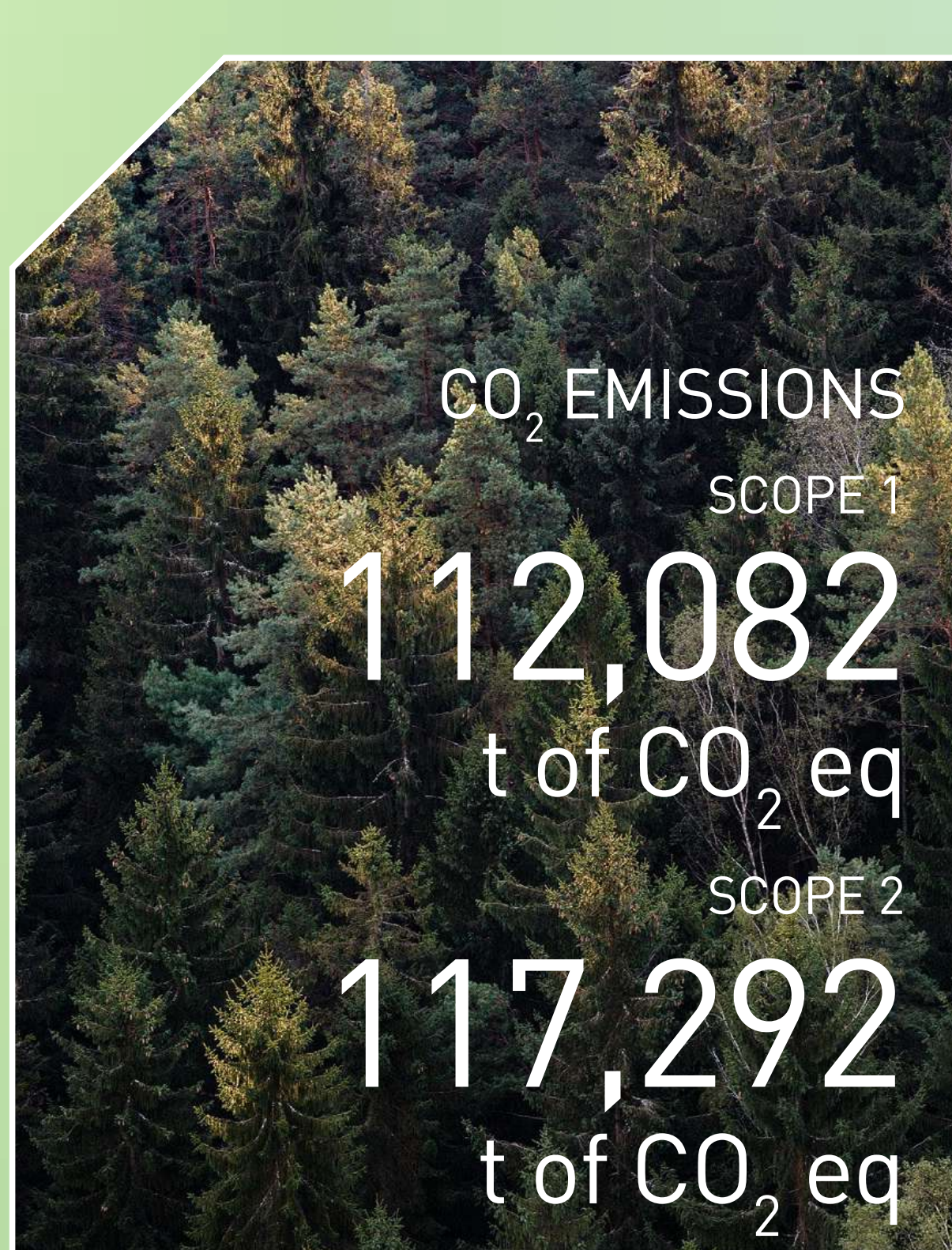
22%



7,257,745 MWh



263 Kg CO2 eq/ t



SCOPE 1
785,311
t of CO2 eq

SCOPE 2
1,022,703
t of CO2 eq

3. COMMITTED TO PEOPLE & THE LOCAL COMMUNITY

Our priority is the safety and health of our professionals.

Goal: to become zero accidents company



20%

increased presence
of women
in the last 5 years

17%



97.3%

Professionals
with indefinite
contract

93.6%



Investment
in training

0.43
M€

2.83M€

91.4%

of purchases made
from local suppliers
in territories
with presence

75.4%



Local
suppliers

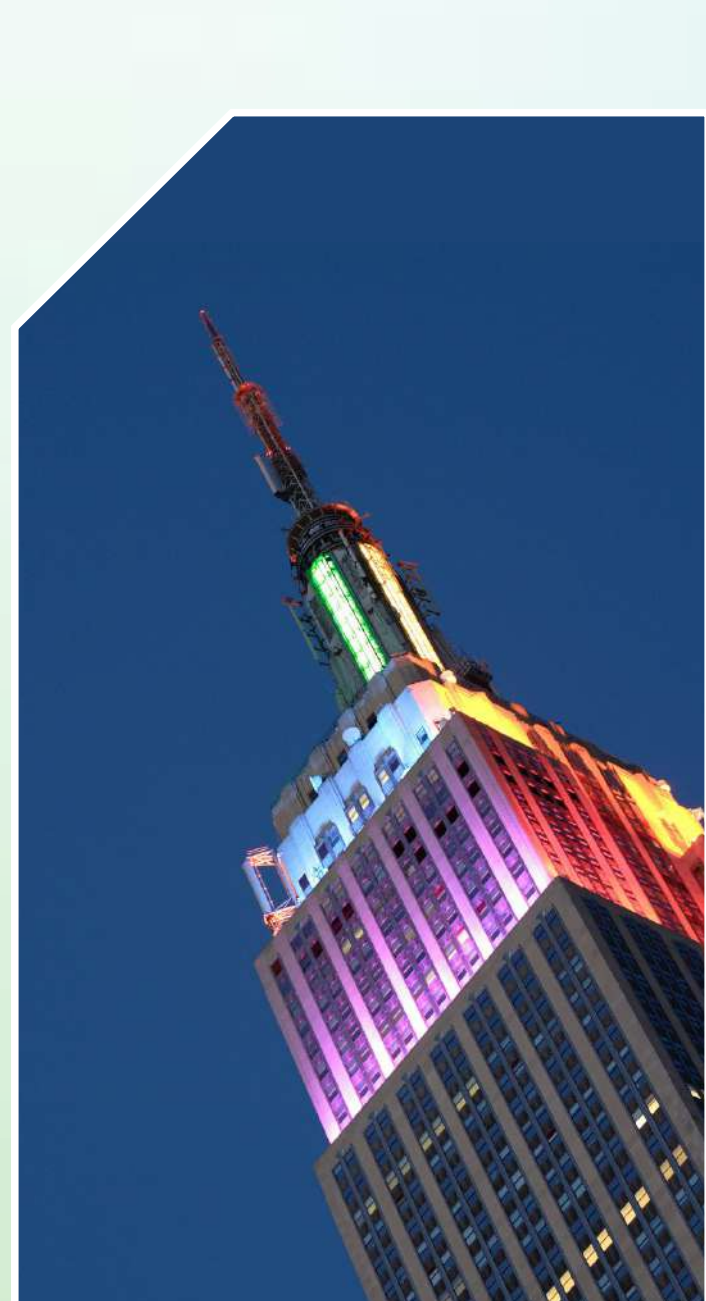
1,557

15,729

4. PLANET ANNUAL SAVINGS ACHIEVED THANKS TO THE CIRCULAR AND LOW EMISSIONS

1.84

million m³
of natural
resources



equivalent to
1.8 Empire
State Buildings

13.1Mm³

The
consumption of

2.58

million m³
of water



which is comparable
to a city of 2,575,602
inhabitants in a year

17Mm³

The
consumption of

2,253

GWh/year
of electricity



the equivalent of the
consumption of a city
of 0.7 million inhabitants
in a year

16,700 GWh/year

The
emission of

1.76

million tons
of CO₂



comparable to those
generated
by 0.38 million cars
running for a year (24/7)

12 Mt



Data extracted from the Celsa Group's 2021 Sustainability Report verified by a third party

• CELSA Group data